

Sample MCQ's

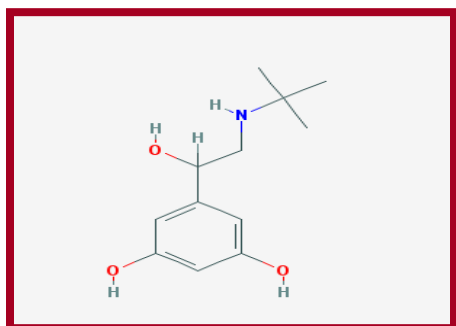
Final year B. Pharm Sem-VIII (CBSGS)

Sub: Pharmaceutical Chemistry-IV

Q.1 Identify the non-selective β adrenergic receptor agonist from the following options

- A) Isoproterenol
- B) Atenolol
- C) Acebutalol
- D) Propranolol

Q.2 Identify the below given drug which is the N-tert-butyl analog of Metaproterenol β -agonist



- A) Colterol
- B) Isoproterenol
- C) Terbutaline
- D) Albuterol

Q.3 Select the correct option about the metabolism of Salmeterol

- A) Metabolized by COMT
- B) Not metabolized by COMT or MAO
- C) Metabolized by MAO
- D) Metabolized by COMT and MAO

Q.4 Identify the β -2 agonist, used as uterine relaxant

- A) Albuterol
- B) Salmeterol
- C) Atenolol
- D) Retodrine

Q.5 Choose the correct statement about the about Phenylephrine, a selective adrenergic α -agonist

- A) It is a selective α_1 -agonist
- B) It is a selective β_1 -agonist
- C) It is a nonselective adrenergic α -agonist
- D) It is a nonselective adrenergic β -agonist

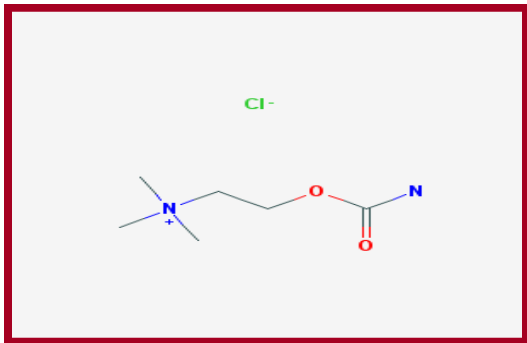
Q.6 Identify the 2-Arylalkylimidazoline α_1 -agonist from the options given below

- A) Guanabenz
- B) Guanfacin
- C) Naphazoline
- D) Clonidine

Q.7 The neurotransmitter involved in the Cholinergic system is one of the below given option

- A) Adrenaline
- B) Acetylcholine
- C) Epinephrine
- D) Nor-epinephrine

Q.8 Identify the below given structure of a Cholinomimetic drug



- A) Carbachol chloride
- B) Bethanechol chloride
- C) Pilocarpine hydrochloride
- D) Methacholine

Q.9 Identify the Para-amino phenol derivative from the below given options

- A) Indomethacin
- B) Sulindac
- C) Paracetamol
- D) Nabumetone

Q.10) Identify the drug molecule from the given IUPAC nomenclature from the class, Aryl and heteroarylacetic acid derivatives 4-(6-methoxynaphthalen-2-yl)butan-2-one

- A) Indomethacin
- B) Nabumetone
- C) Sulindac
- D) Ibuprofen

Q.11) Which of the following molecule is a uricosuric agents?

- A) Rofecoxib
- B) Celecoxib
- C) Probenecid
- D) Nimesulide

Q.12) Which of the following opioid analgesic is the prodrug of Morphine

- A) Levorphanol
- B) Dextromethorphan
- C) Pentazocine
- D) Codeine sulphate

Q.13) The Tetracyclic derivative from the class opioid analgesic is commonly known by which name

- A) 4,5-Epoxymorphinan
- B) Morphinans
- C) Benzomorphinans
- D) Diphenylheptanes

Q.14) Which of the following flexible opioid analgesic is also known as Pethidine

- A) α - Prodine
- B) β - Prodine
- C) Meperidine
- D) Pheniridine

Q.15) Which of the following drug molecule is a mixed agonist and antagonist at mu receptor

- A) Naloxane
- B) Meperidine
- C) Nalorphine
- D) Naltrexone

Q16 5-(2-chlorophenyl)-7-nitro-1,4-benzodiazepin-2-one is IUPAC name which drug

- A) Clonazepam
- B) Nitrazepam
- C) Diazepam
- D) Oxazepam

Q. 17 Select incorrect statement about Structure–activity relationships of 1,4-benzodiazepine

- A) Substituents at positions 6, 8, or 9 of 1,4-benzodiazepine ring generally decrease anxiolytic activity
- B) Proton-donating group (amino) is structural requirement for binding to BZR.
- C) increased in electro negativity of functional groups or sustituents at 7-position of 1,4-benzodiazepine ring increases anxiolytic activity.
- D) Aromatic benzene ring A of of 1,4-benzodiazepine is required for binding of 5-phenyl -1,4-benzodiazepin-2-one derivatives to the BZR.

Q.18) γ -vinyl GABA is _____

- A) vigabatrin
- B) progabide
- C) lamotrigine
- D) tiagabine

Q.19) _____ heterocyclic ring is present in Phenytoin molecule

- A) oxazolidine-2,4-dione
- B) imidazolidine-2,4-dione
- C) pyrrolidine-2,5-dione
- D) pyrimidine-2,4,6(1H,3H,5H)-trione

Q.20) All of the following antidepressant drugs are from Norepinephrine and serotonin reuptake inhibitors (NSRIs) Class except_____

- A) Amitriptyline
- B) Imipramine
- C) Doxepine
- D) Nortriptyline

Q.21) _____ tricyclic ring is present in Doxepine

- A) dihydrodibenzazepine ring
- B) dibenzocycloheptadiene ring
- C) dibenzoxepin ring
- D) 5H-dibenz[*b,f*]azepine ring

Q.22) Identify generic name of azapirone class of Anxiolytic drug

- A) Oxazepam
- B) buspirone
- C) meprobamate
- D) tybamate

Q.23) 2-chloro-10-[3-(dimethylamino)propyl]phenothiazine is IUPAC name which drug

- A) Chlorpromazine
- B) Triflupromazine
- C) Promazine
- D) Thioridazine

Q.24) Thioridazine is converted to mesoridazine by which Phase-I pathway.

- A) benzylic oxidation
- B) N-oxidation
- C) S-oxidation
- D) allylic oxidation

Q.25) D1-types dopamine receptors that inhibit adenylyl cyclase are

- A) D2 , D3, and D4
- B) D1 and D2
- C) D1 and D3
- D) D1 and D5

Q.26) Selegiline acts by which of the following mechanism

- A) Inhibition of MAO-B
- B) Inhibition of MAO-A
- C) Inhibition of MAO-A & B
- D) Promoting dopamine release from intraneuronal storage sites

Q.27) Starting material used in synthesis of fluoxetine is____

- A) acetone, dimethylamine & formaldehyde
- B) benzophenone, dimethylamine & formaldehyde
- C) acetophenone, dimethylamine & formaldehyde
- D) benzophenone, dimethylamine & benzaldehyde

Q.28) All of the following drugs are from Glucocorticoids with moderate to low salt retention Class except_____

- A) Cortisone
- B) Triamcinolone
- C) Prednisone
- D) Hydrocortisone

Q.29)_____is Anabolic Androgenic steroid.

- A) oxymesterone
- B) mestranol
- C) norgestrel
- D) estradiol

Q.30) Out of following which enzyme involved in conversion of Testosterone to estrdiol

- A) 3 α -HSD
- B) aromatase
- C) 17 β -HSD
- D) 5 α -reductase